



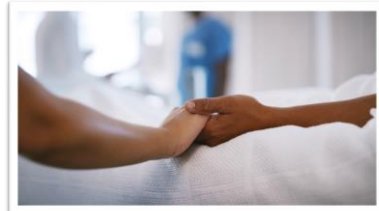
PLAN/PROVIDER APPROACHES TO CAREGIVER SUPPORT

Monique Parrish, DrPH, MPH, LCSW

1

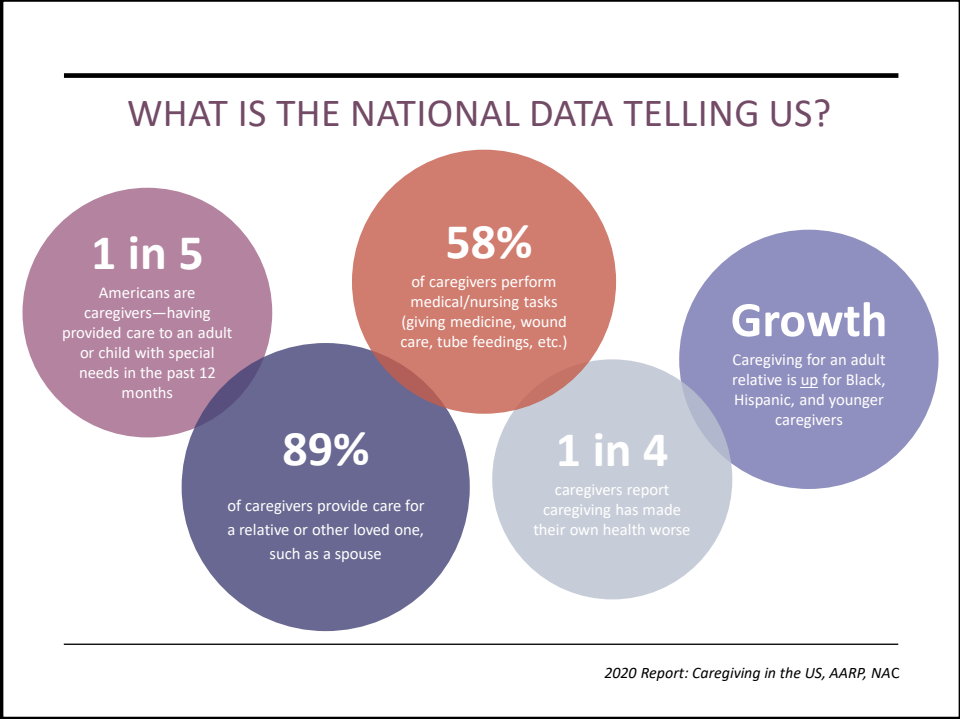
WHY SUPPORT CAREGIVERS?

- California's population of adults aged 50 and older is **increasing at a record pace**
- Older adults represent the **fastest-growing age cohort** receiving care through California's safety-net provider system
- This population, many of whom are dual eligible, require **significant care and coordination**
- **Caregivers** are increasingly an important linchpin for adults with serious illness receiving palliative care

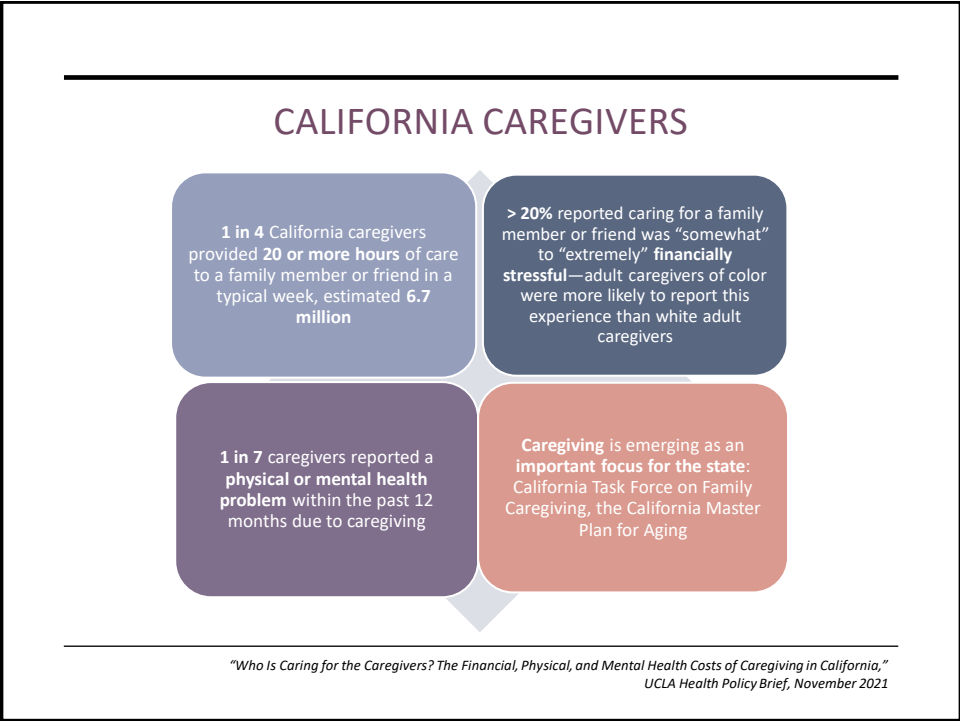


"Improving Care for California's Older Adults: The Role of Community Health Centers and Public Hospital Systems," 2022, CHCF

2



3



4

WHO IS DOING WHAT TO SUPPORT CAREGIVERS?

Medicare Advantage (MA)
plans are increasingly offering benefits to family caregivers - support groups, 1:1 coaching, respite

VA
offers caregiver support – workshops, well-being coaches, peer mentoring, respite

Florida's statewide
Medicaid Managed Care Long-Term Care program requires managed care programs providing HCBS to community-dwelling enrollees to evaluate and create an individualized care plan for the caregiver

5

CAPC RECOMMENDATIONS TO SUPPORT CAREGIVERS

1

Include caregivers in the care team— identify/document who they are, include them in conversations and family meetings

2

Assess caregiver health, well-being, capacity, willingness to be a caregiver plus unmet needs

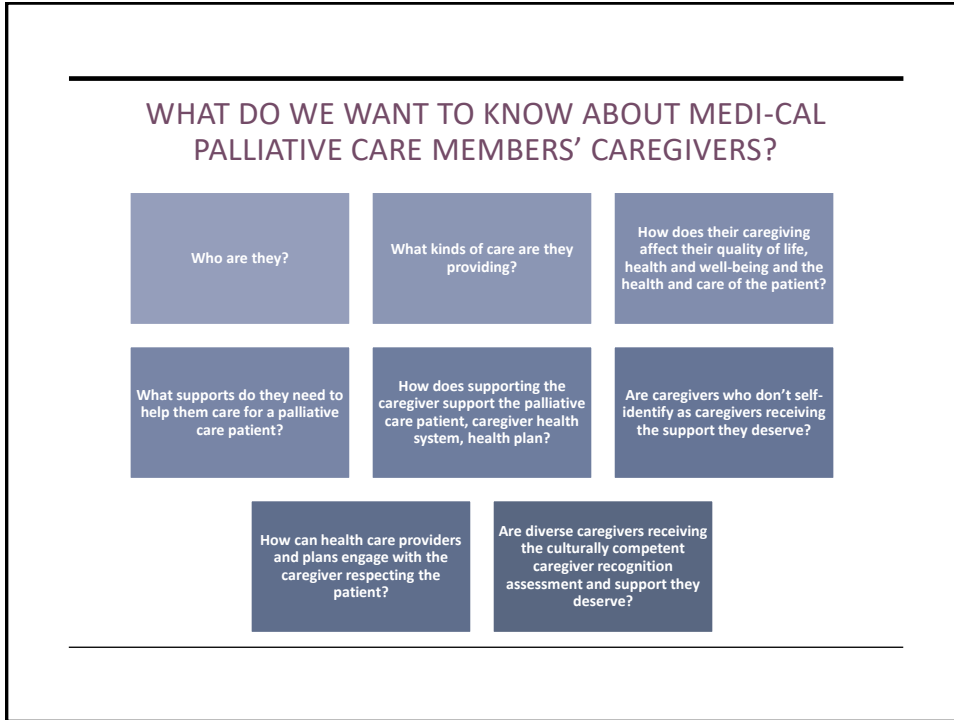
3

Create care plans for both caregiver and patient matching their needs and goals

4

Address caregiver needs via referrals to appropriate services, e.g., consultation, online/community resources

6



7



8

CAREGIVER ASSESSMENTS AND SUPPORTS

ACTIVITY	Providers Offering*	Plans Requiring*
Assistance with application to become an IHSS provider or request IHSS provider	92%	50%
Identification of the primary caregiver in the patient's medical record	88%	43%
Referral to community/regional/national resources for caregivers	88%	36%
Short-term counseling or other emotional support for caregivers (provided by palliative care organization)	71%	36%
Screening for caregiver support needs with a standardized tool	33%	0%
Formalized process to follow up with caregivers who have significant needs	29%	7%
Separate medical record for the identified caregiver	0%	0%
None of the above	0%	43%

* Responses to 2023 CCCC Medi-Cal PC survey from 24 palliative care providers and 14 Medi-Cal managed care plan.



THANK YOU

CAREGIVER REACTOR PANEL

James C. Cotter, MD MPH FAAFP, Associate Medical Director, Health Services Department, Partnership HealthPlan of California

Cyndie Holzworth, RN, Director of Nursing, Outpatient, Hoffmann Hospice

Blanca Martinez, MSW, CCM, Case Management Director, Molina Healthcare

Jeanine Ellinwood, MD, HMDC Medical Director, Snowline Hospice
